

*The World's Most Cost-Effective  
Log Cabin Building System*

Make your

# **DREAM LOG CABIN**

a Reality





OPENING YOUR WORLD TO THE  
**MOST VERSATILE,  
COST-EFFECTIVE,  
LOG CABIN  
BUILDING SYSTEM**  
ON EARTH!

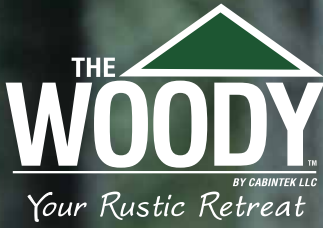






# CONTENTS

WHAT'S A WOODY?	4-5
3 EASY STEPS	6
THE WOODY INFORMATION PACKET	7
THE WOODY LOG CABIN SELECTION	8-29



# WHAT'S A

**The Woody by Cabintek is an authentic log cabin, made from full logs harvested, dried and fabricated in Wausau, Wisconsin, USA.**

We have simplified log home building through Cabintek's engineered construction process.

*The Woody is made exclusively for the do-it-yourselfer.*





# WOODY?

## WOODY BENEFITS INCLUDE:

### Authentic natural beauty of full logs

- We procure only the finest pine logs in North America
- Enjoy the ambiance of log home living for generations
- 8" full log walls comply with stringent energy code standards

### The Woody Log Cabin Building System

- Guarantees quality while maximizing plan flexibility
- The Woody design minimizes energy loss and virtually eliminates jobsite scrap
- Allows for seasonal or year-round use in the toughest of climates
- Pre-engineered materials and hardware allow for fast and accurate installation
- Windows and doors install with ease
- The Woody System can accommodate the grandest or simplest of plans
- Designed to be permanent or portable

### Typical uses of The Woody

- Year-round home
- Room additions
- Recreational cabin
- Stand-alone three-season rooms
- Remote hunting and fishing camps
- Portable workforce housing
- Campground accommodations

**Woody log homes provide exceptional value without sacrificing design, beauty, quality or simplicity of construction.**

# The Construction Process in 3 EASY STEPS

# 1

## **ORDER – Information Packet**

---

Get a Woody information packet by contacting Cabintek at 1.800.564.1677.

**Includes:**

- Floor plans
- Installation overview
- Detailed list of materials to budget your cabin

# 2

## **PURCHASE – Woody Cabin Kit**

---

Buy your Woody Cabin Kit and other construction materials required.

**Building process in 3 phases:**

- Phase 1 – Woody Kit
- Phase 2 – “Dry In” Construction Materials
- Phase 3 – Interior Completion Materials

# 3

## **START BUILDING**

---

The Woody is designed to be built by the do-it-yourselfer or contractor of your choice.

## **Questions along the way?**

Contact Cabintek at 1.800.564.1677 or [techsupport@cabintek.com](mailto:techsupport@cabintek.com)





# The Woody **INFORMATION PACKET**

## **ORDER AN INFORMATION PACKET TO GET STARTED ON BUILDING YOUR VERY OWN DREAM LOG CABIN TODAY!**

### **Includes:**

- **Interactive Diagram and Blueprints**  
Allowing you to customize and plan the furnishing of your very own log home
- **Step-by-Step Instructions**  
So the construction process is faster and easier than ever before
- **Detailed List of Materials**  
Providing you with all the information you need to maintain and stay within your budget

The Woody is unlike any other construction project. It's perfectly designed and crafted for those who have a passion for building, without needing the aid of experts or professionals to complete the project. Each custom Woody Kit is precision cut—so there's no measuring or cutting required.

*See for yourself just how easy it can be to transform your dream into reality.*

**Order The Woody Information Packet today.**



## CHALET

3 Story | 6 Bedrooms | 3 Bathrooms





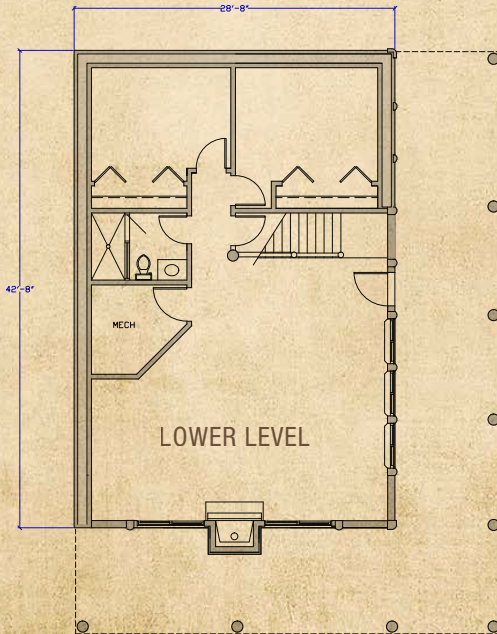
# Simple Cabins – Excellent Value

Model #WC699969008-5  
2,860 SQ. FT.

## ▼ FRONT ELEVATION



## ▼ PLAN MODEL: 42'8" x 28'8"



## DAKOTA W/GARAGE

Model #DD415514704-2  
1,290 SQ. FT.

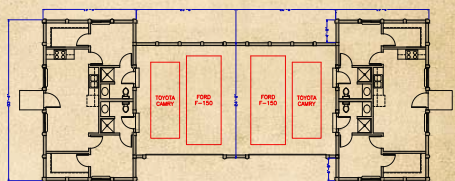
4 Bedrooms | 4 Bathrooms



### ▼ FRONT ELEVATION



### ▼ FLOOR PLAN: 79' x 33'4"





# Simple Cabins – Excellent Value

## PAYSON ISLAND

Model #PI787780013-19  
1,267 SQ. FT.

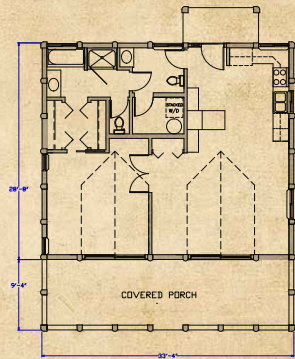
1 Bedroom | 2 Bathrooms



### ▼ FRONT ELEVATION



### ▼ FLOOR PLAN: 38' x 33'4"





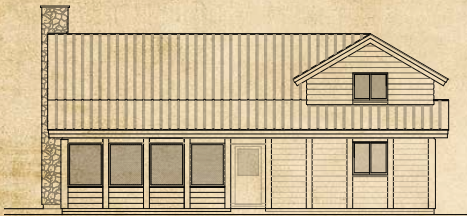
## BOBCAT

Model #BC613892016-13  
1,509 SQ. FT.

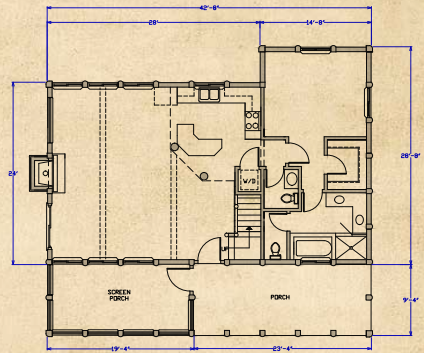
2 Story | 3 Bedrooms | 3 Bathrooms



### ▼ FRONT ELEVATION



### ▼ FLOOR PLAN: 42'8" x 38'



1<sup>ST</sup> FLOOR



# Simple Cabins – Excellent Value

**FLAMBEAU**

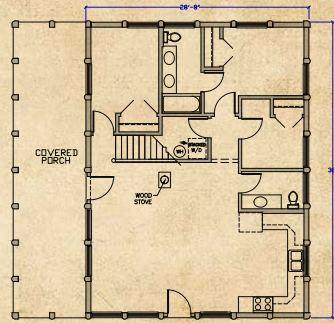
Model #WF88888012-14  
1,509 SQ. FT.

2 Story | 5 Bedrooms | 2 Bathrooms



▼ FRONT ELEVATION

▼ FLOOR PLAN: 38' x 38'



1<sup>ST</sup> FLOOR

## RESORTER

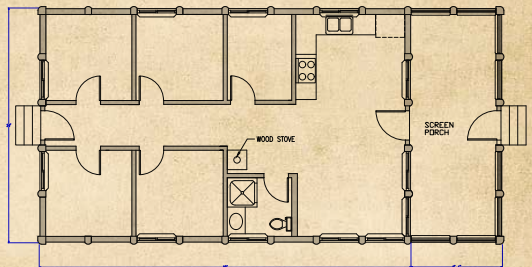
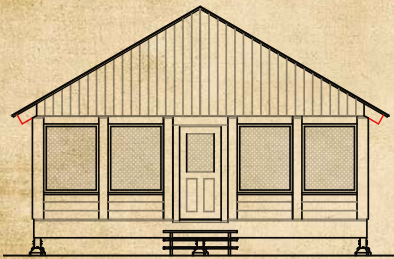
Model #WR585580020-3  
912 SQ. FT.

5 Bedrooms | 1 Bathroom



### ▼ FRONT ELEVATION

### ▼ FLOOR PLAN: 47'4" x 24'





# Simple Cabins – Excellent Value

**BUFTON**

Model #WB686800012-2  
1,489 SQ. FT.

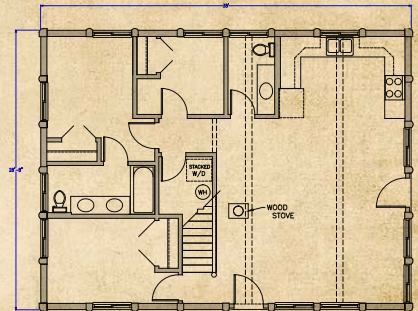
2 Story | 3 Bedrooms | 2 Bathrooms



▼ FRONT ELEVATION



▼ FLOOR PLAN: 38' x 28'8"



1<sup>ST</sup> FLOOR



# Cabin Collection

## BEAR DEN

2 Bedrooms | 1 Bathroom

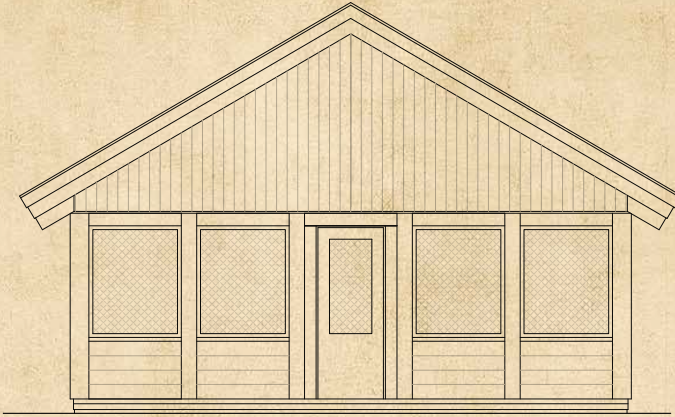




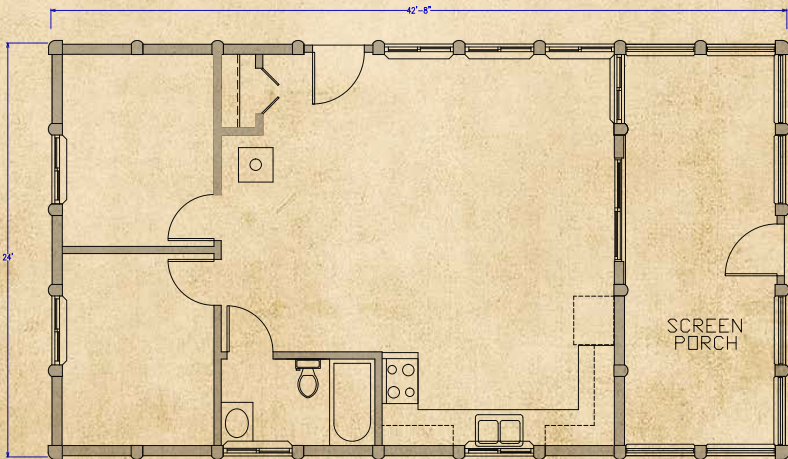
# Simple Cabins – Excellent Value

Model #BD595590015-3  
1,024 SQ. FT.

## ▼ FRONT ELEVATION



## ▼ PLAN MODEL: 42'8" x 24'





## BEAR CUB

2 Bedrooms | 1 Bathroom

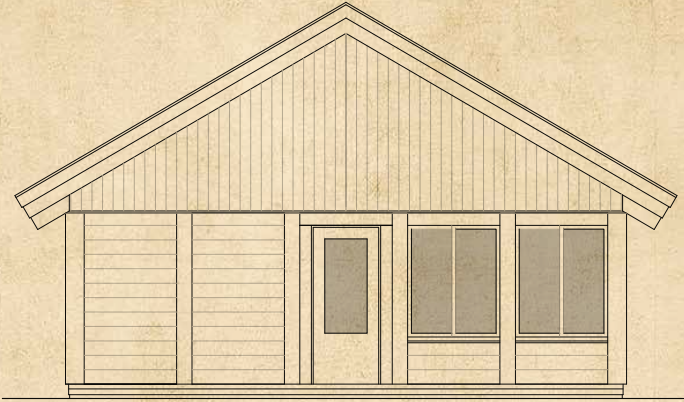




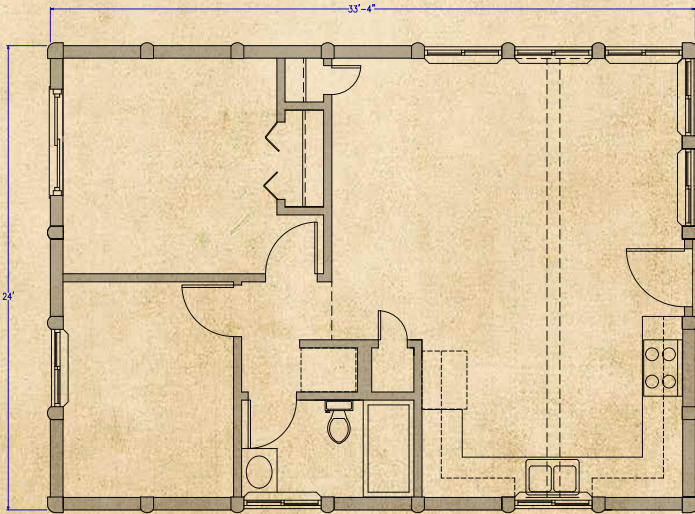
# Simple Cabins – Excellent Value

Model #BC575700008-2  
800 SQ. FT.

## ▼ FRONT ELEVATION



## ▼ PLAN MODEL: 33'4" x 24'



## SAFARI

Model #SS484840014-2

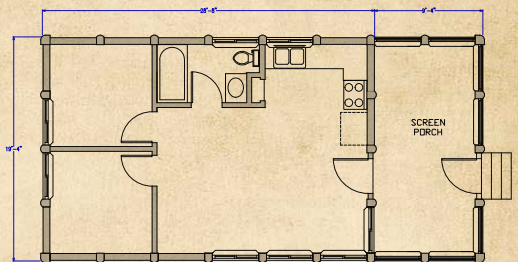
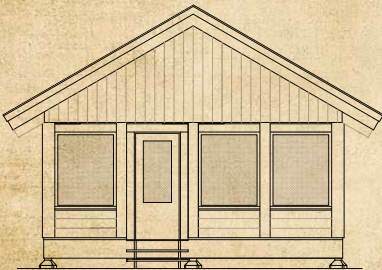
554 SQ. FT.

2 Bedrooms | 1 Bathroom



▼ FRONT ELEVATION

▼ FLOOR PLAN: 38' x 19'4"





# Simple Cabins – Excellent Value

**GET-A-WAY**

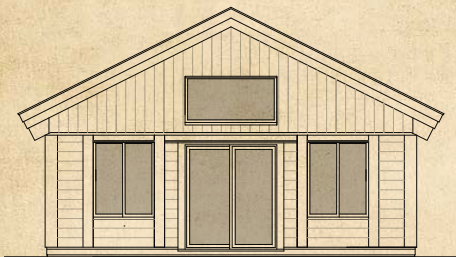
Model #GA55550008-3

576 SQ. FT.

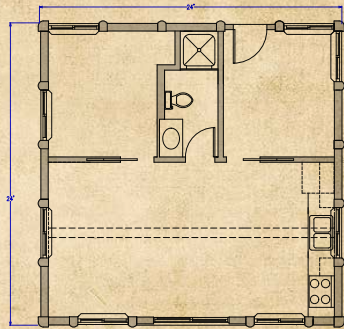
2 Bedrooms | 1 Bathroom



▼ **FRONT ELEVATION**



▼ **FLOOR PLAN: 24' x 24'**





## BUNK FATIGUE

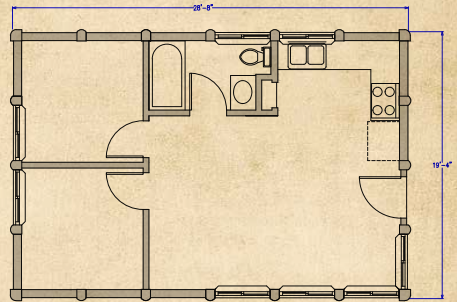
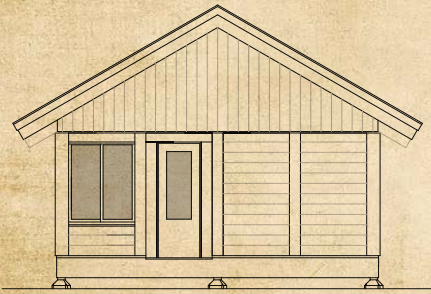
Model #BF464600008-1  
554 SQ. FT.

2 Bedrooms | 1 Bathroom



▼ FRONT ELEVATION

▼ FLOOR PLAN: 28'8" x 19'4"





# Simple Cabins – Excellent Value

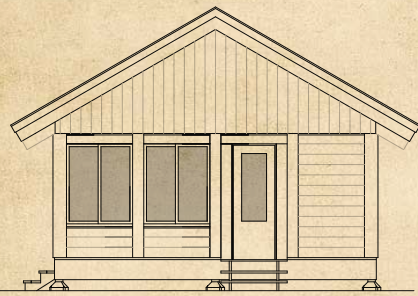
## GREAT PLAINS

Model #GP464600008-1  
554 SQ. FT.

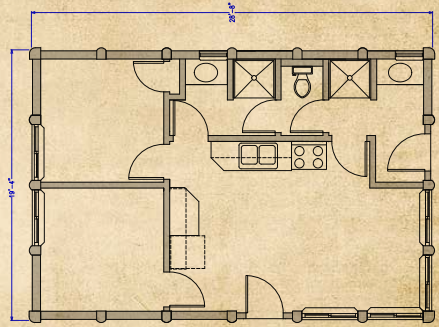
2 Bedrooms | 1 Bathroom



▼ FRONT ELEVATION



▼ FLOOR PLAN: 28'8" x 19'4"



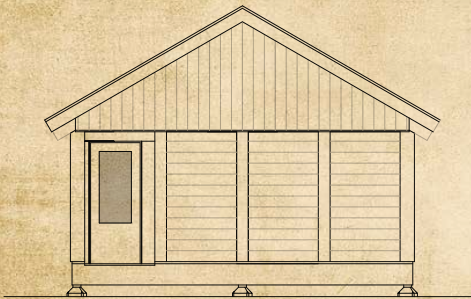
## CAMP LUXURY

Model #CL444400007-1  
387 SQ. FT.

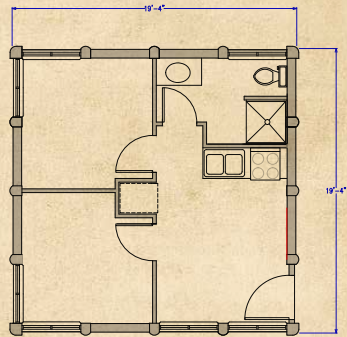
2 Bedrooms | 1 Bathroom



### ▼ FRONT ELEVATION



### ▼ FLOOR PLAN: 19'4" x 19'4"





# Simple Cabins – Excellent Value

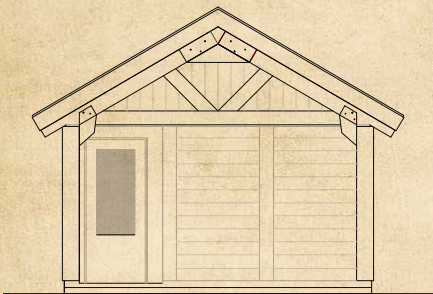
**SNOW FOX**

Model #SF5335300003-6  
284 SQ. FT.

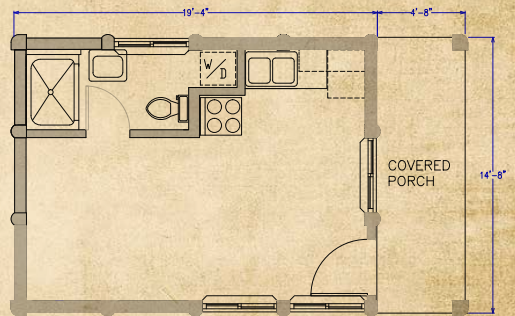
Open Bedroom | 1 Bathroom



▼ FRONT ELEVATION



▼ FLOOR PLAN: 19'4" x 14'8"



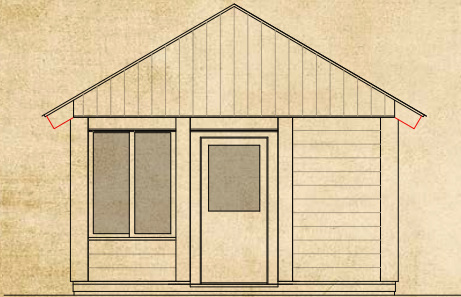
## CAMP WEEKENDER

Model #CW343400005-1  
284 SQ. FT.

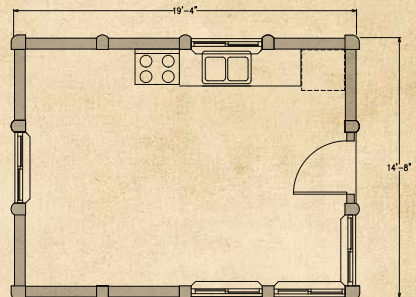
Bunks



▼ FRONT ELEVATION



▼ FLOOR PLAN: 19'4" x 14'8"





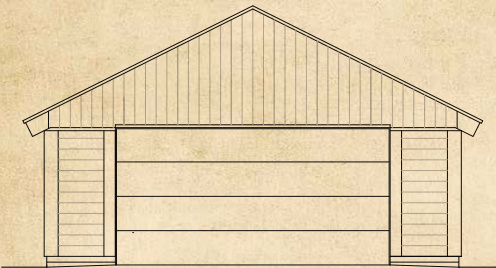
# Simple Cabins – Excellent Value

**WOODY GARAGE**

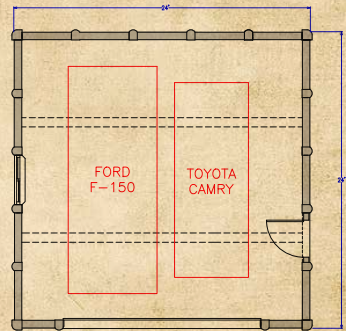
Model #WG555500001-5  
576 SQ. FT.



▼ **FRONT ELEVATION**



▼ **FLOOR PLAN: 24' x 24'**

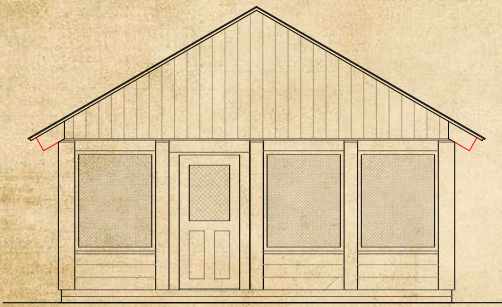


## NORTH WOODS

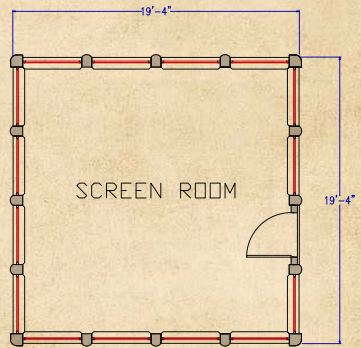
Model #NW444400015-1  
387 SQ. FT.



▼ FRONT ELEVATION



▼ FLOOR PLAN: 19'4" x 19'4"





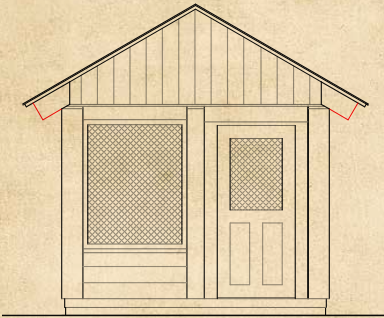
# Simple Cabins – Excellent Value

**EZ BREEZE**

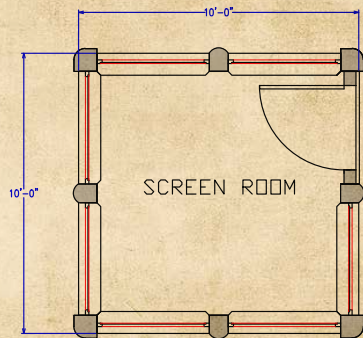
Model #EZ222200007-1  
100 SQ. FT.



▼ **FRONT ELEVATION**



▼ **FLOOR PLAN: 10' x 10'**







THE  
**WOODY**<sup>™</sup>  
BY CABINTEK LLC  
*Your Rustic Retreat*

**FOR MORE INFORMATION:**

Contact Cabintek at

**1.800.564.1677**

or [techsupport@cabintek.com](mailto:techsupport@cabintek.com)