



# Woody Building System

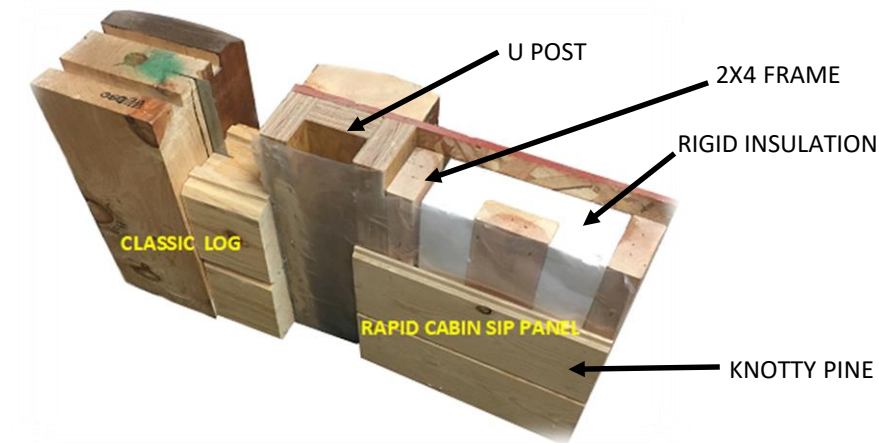
The Most Cost-Effective Log Cabin Building System on The Market

# Time is Money & Sanity

- The Woody Building System takes advantage of productivity investments in the manufacturing plant and provides *simplicity* and *speed* on the jobsite
- Job site construction has historically been inefficient and chaotic. Industry estimates for home construction peg the best construction companies in the world only able to recognize half of time on site as being applied to building a home
- For the Do-It-Yourself, this can be the environment you find yourself in, which is why we have created the Woody Building System
- We will save you time and money because of our engineered and manufactured log cabin components. We can help you even if you can barely hammer a nail!

# Woody Models

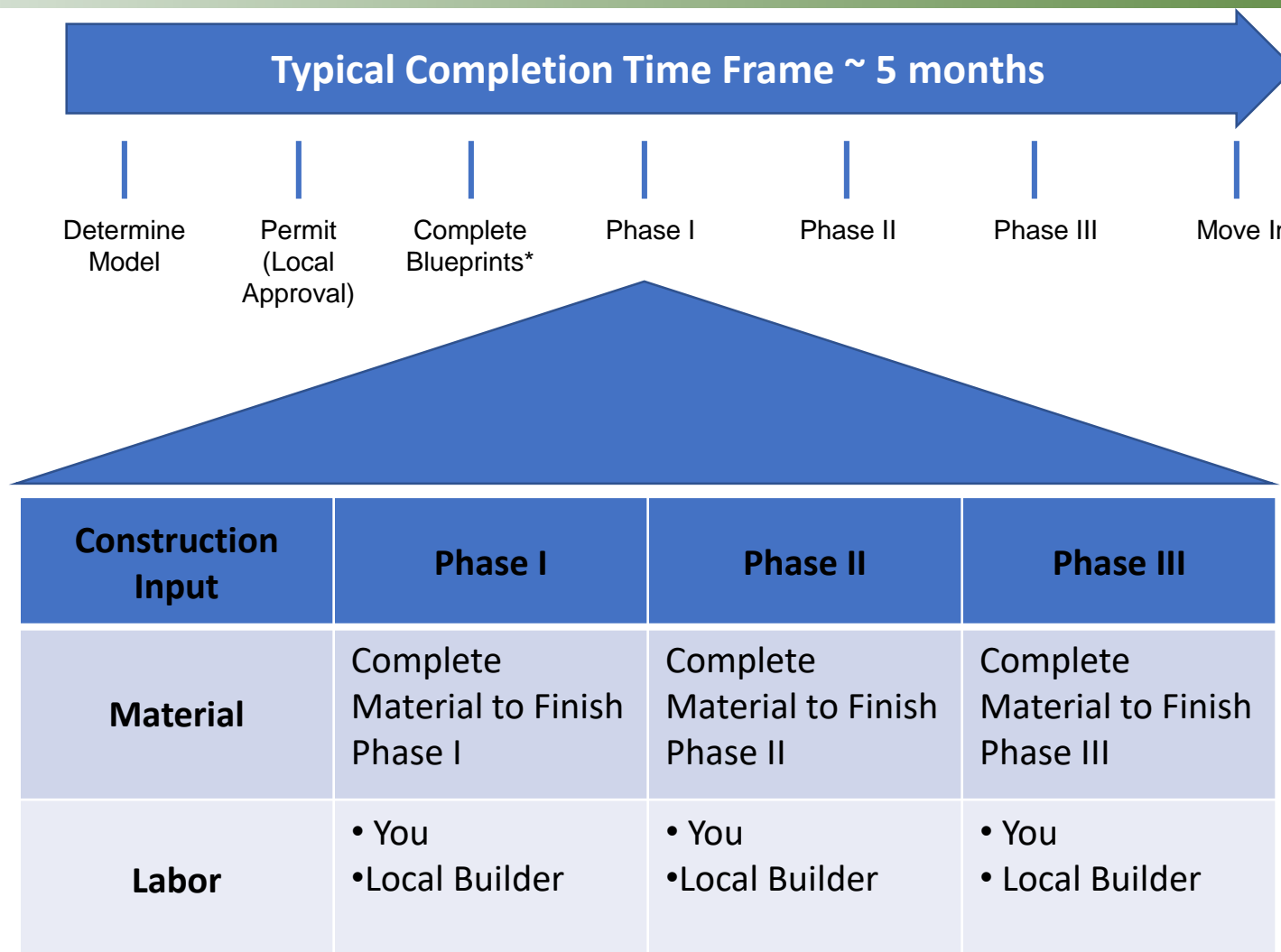
- You have two choices of Woody Model Series
  - The Classic Series – Full 8” log system, pre-cut and engineered to fit together without need for measuring or cutting (5 basic parts...infinite building options)
  - The Rapid Cabin Series – Structural Insulated Panels, pre-manufactured and engineered with robust log siding and posts to fit together without the need for measuring and cutting (SIP constructed basic parts...infinite building options)
    - Both series are engineered and drilled for electrical wiring
    - Both series are insulated and beautiful



# The Woody Building System Phases

- We will talk to you about three phases of building your cabin:
  - Phase 1 – Your Woody Kit – Walls, Vertical Logs/Support, Rafters, Knotty Pine Ceiling Closure Boards, Window Sills, Flashing & Mounting Hardware
  - Phase 2 – Phase 1 + Roof Framing & Deck, Roof Insulation, Doors, Windows, Loft, Floor Framing & Deck, Floor Insulation, Decking, Gable Finish Material, Interior Wall Framing (Asphalt or Metal Roof not included)
  - Phase 3 – Phase 2 + All other material, utilities & appliances to complete your cabin
- We are often asked what will be the total cost of my log cabin. A rule of thumb is 3x the Phase 2 cost. Depending on the cabin and your needs, this number could vary in either direction – the large variable is often labor after completion of Phase 2...back to the value of the Woody Building System, we control the majority of material costs and save you much of the labor time to get you Dried In!

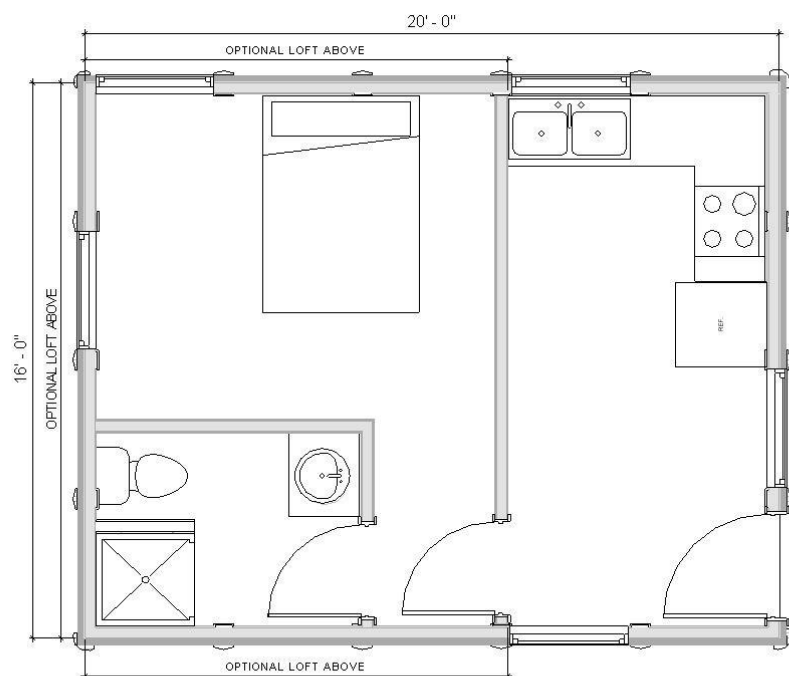
# What is the Process to Start



\* Blueprints are generally \$4,000 after agreement of price, applied to the cost of your Woody Kit

# QUAIL MODEL

- Rapid Cabin Dimensions = 16' x 20'
- Approximately 320 Sq. Ft.
- A simple cabin shell that allows you to finish as desired.



QUAIL 16'x20'

© CABINTEK LLC

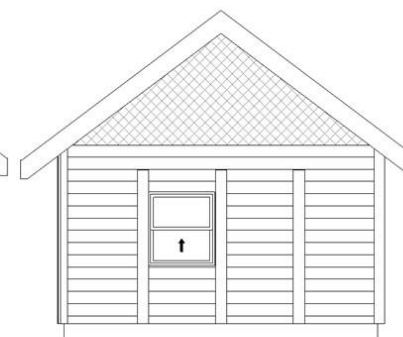
MAIN FLOOR 320 SF

OPTIONAL LOFT 192 SF

## QUAIL RAPID CABIN



FRONT ELEVATION



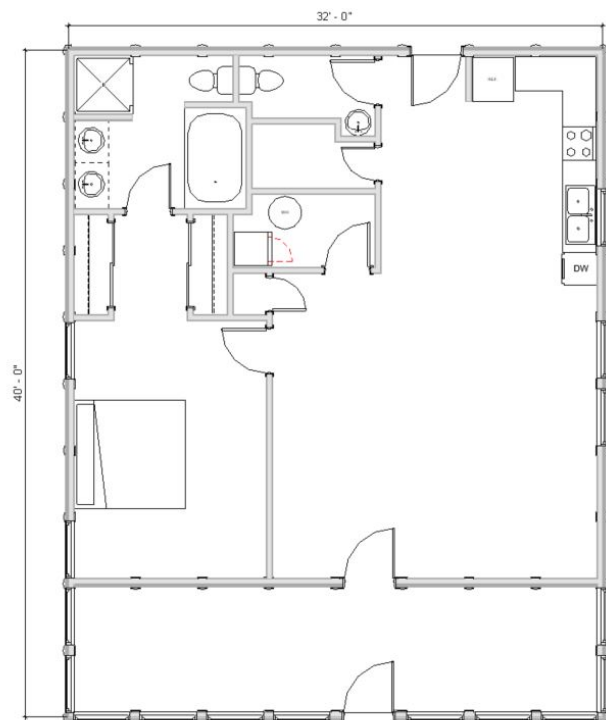
BACK ELEVATION



SIDE ELEVATION

# PHEASANT MODEL

- Rapid Cabin Dimensions = 32' x 40'
- 1 Bedroom
- 1.5 Bathroom
- Approximately 1280 Sq. Ft.
- Model includes a covered porch
- Loaded with amenities. This model is perfect to maximize amenities for just you! Afterall what is a cabin for than to get away from everything!



PHEASTANT 32'x40' ©CABINTEK,LLC  
MAIN FLOOR 1,280 SF

## PHEASANT RAPID CABIN



FRONT ELEVATION



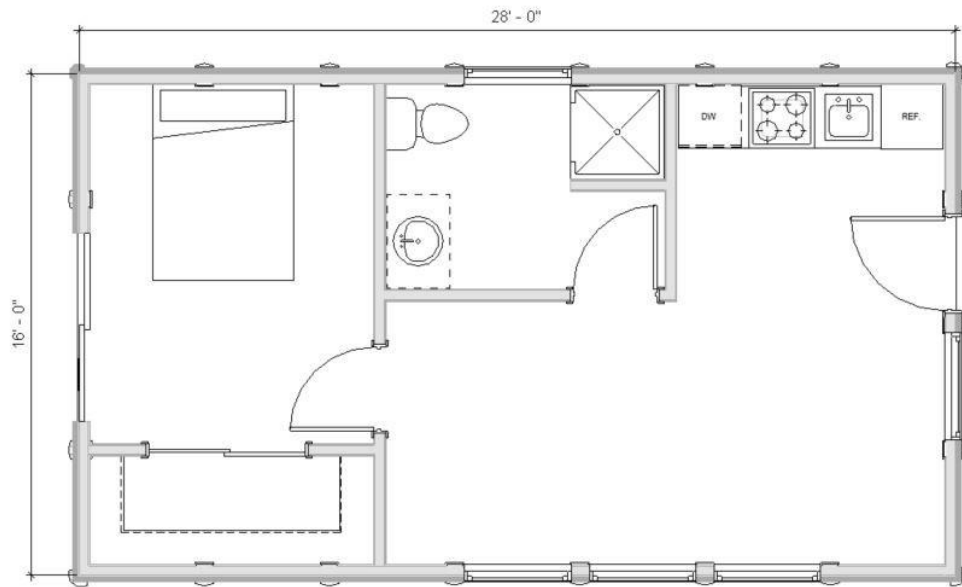
BACK ELEVATION



SIDE ELEVATION

# DRAKE PINTAIL MODEL

- Rapid Cabin Dimensions = 16' x 28'
- Approximately 448 Sq. Ft.
- This model is for sure the model for the do-it-yourselfer. We give you the beauty, simplicity and speed of a quick cabin and let you create what is required to meet your needs on the inside. A popular model for those that want value and plan to finish as they see fit.



**DRAKE PINTAIL 16'x28'** © CABINTEK LLC  
MAIN FLOOR 448 SF

## DRAKE PINTAIL RAPID CABIN



FRONT ELEVATION



BACK ELEVATION

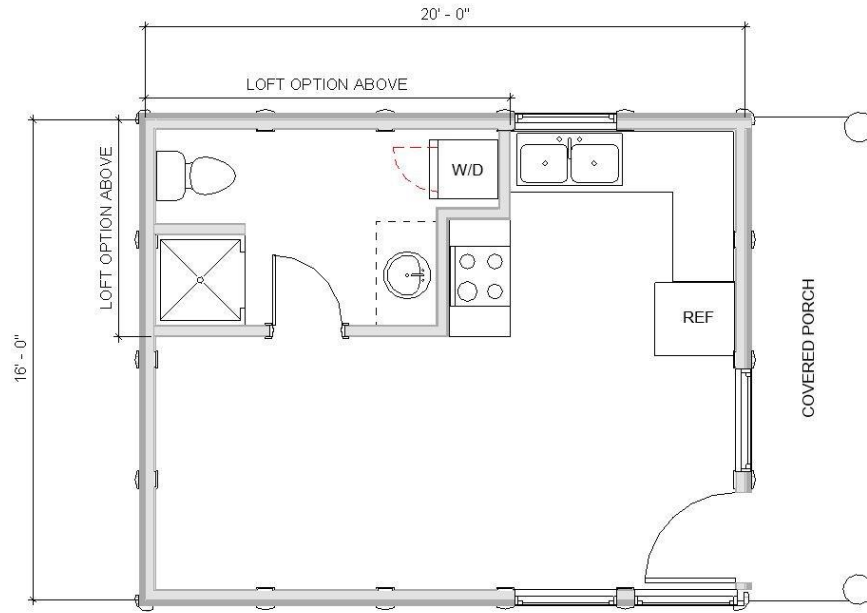


SIDE ELEVATION



# CHUKAR MODEL

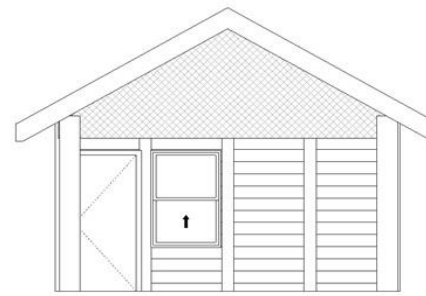
- Rapid Cabin Dimensions = 24' x 44'
- 1 Bedroom & 1 Bathroom
- Approximately 320 Sq. Ft.
- Model includes a covered porch
- This cabin perfect for outfitters looking for a beautiful model to shelter hunters and fisherman...or keep it for yourself when you enjoy the outdoors! These models have been popular for remote locations. Easy to install and enjoy fast!



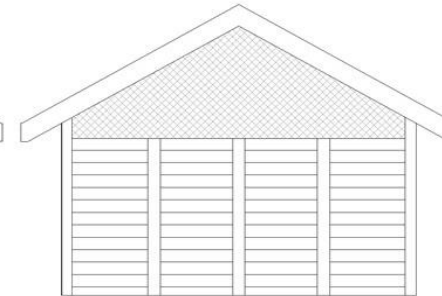
CHUKAR MODEL (16 X 20)

320 SQ. FT

## CHUKAR RAPID CABIN



FRONT ELEVATION



BACK ELEVATION



SIDE ELEVATION