



# Woody Building System

The Most Cost-Effective Log Cabin Building System on The Market

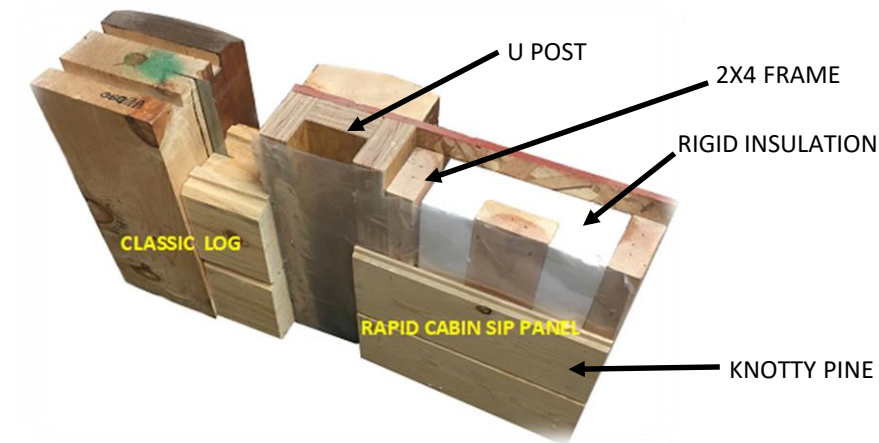


# Time is Money & Sanity

- The Woody Building System takes advantage of productivity investments in the manufacturing plant and provides *simplicity* and *speed* on the jobsite
  - Job site construction has historically been inefficient and chaotic. Industry estimates for home construction peg the best construction companies in the world only able to recognize half of time on site as being applied to building a home
  - For the Do-It-Yourself, this can be the environment you find yourself in, which is why we have created the Woody Building System
  - We will save you time and money because of our engineered and manufactured log cabin components. We can help you even if you can barely hammer a nail!

# Woody Models

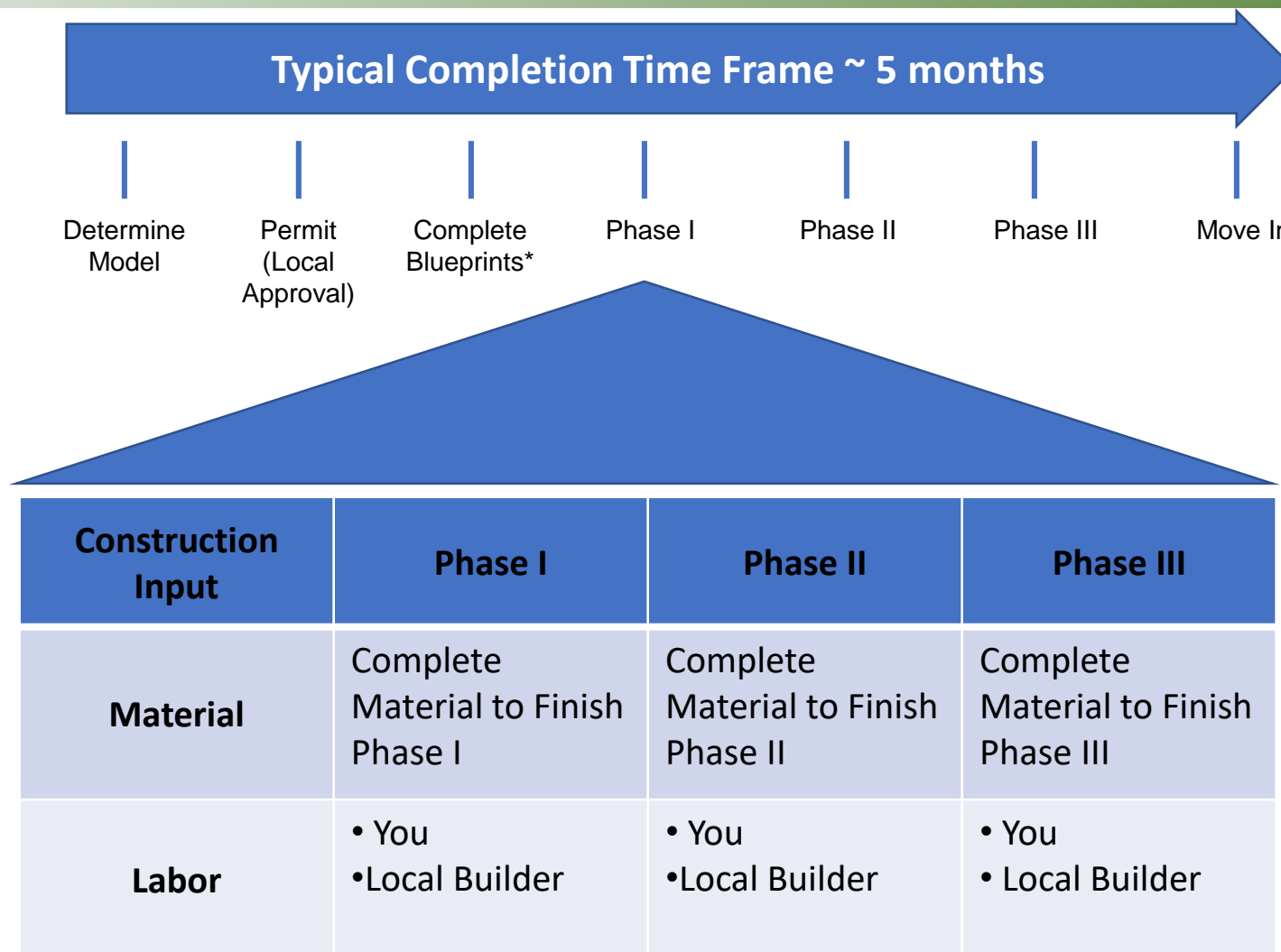
- You have two choices of Woody Model Series
  - The Classic Series – Full 8” log system, pre-cut and engineered to fit together without need for measuring or cutting (5 basic parts...infinite building options)
  - The Rapid Cabin Series – Structural Insulated Panels, pre-manufactured and engineered with robust log siding and posts to fit together without the need for measuring and cutting (SIP constructed basic parts...infinite building options)
    - Both series are engineered and drilled for electrical wiring
    - Both series are insulated and beautiful



# The Woody Building System Phases

- We will talk to you about three phases of building your cabin:
  - Phase 1 – Your Woody Kit – Walls, Vertical Logs/Support, Rafters, Knotty Pine Ceiling Closure Boards, Window Sills, Flashing & Mounting Hardware
  - Phase 2 – Phase 1 + Roof Framing & Deck, Roof Insulation, Doors, Windows, Loft, Floor Framing & Deck, Floor Insulation, Decking, Gable Finish Material, Interior Wall Framing (Asphalt or Metal Roof not included)
  - Phase 3 – Phase 2 + All other material, utilities & appliances to complete your cabin
- We are often asked what will be the total cost of my log cabin. A rule of thumb is 3x the Phase 2 cost. Depending on the cabin and your needs, this number could vary in either direction – the large variable is often labor after completion of Phase 2...back to the value of the Woody Building System, we control the majority of material costs and save you much of the labor time to get you Dried In!

# What is the Process to Start



\* Blueprints are generally \$4,000 after agreement of price, applied to the cost of your Woody Kit

# HORNED OWL MODEL

- Rapid Cabin Dimensions = 24' x 32'
- 2 Bedroom & 1 Bathroom
- Approximately 768 Sq. Ft.
- This compact model is the standard for a family. Open concept in the living room and kitchen offers a great entertainment space with evening privacy.



**HORNED OWL**

**768 SQ. FT.**

## HORNED OWL RAPID CABIN



FRONT ELEVATION



BACK ELEVATION

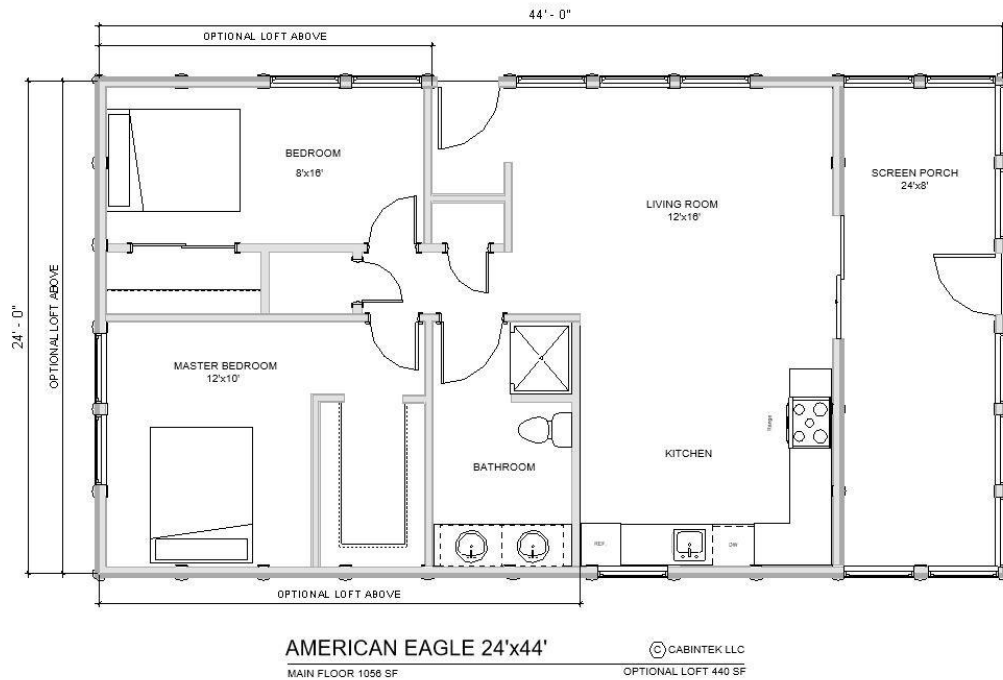


SIDE ELEVATION

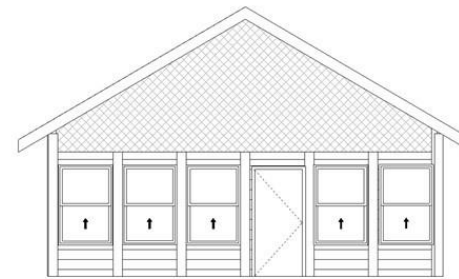


# AMERICAN EAGLE MODEL

- Rapid Cabin Dimensions = 24' x 44'
- 2 Bedroom & 1 Bathroom
- Approximately 1056 Sq. Ft.
- Perfect for year-round use
- This was the model that has put us on the map! Our first cabin we sold was the American Eagle and it has remained popular ever since. All the amenities of a Horned Owl with the addition of a great screened in porch.



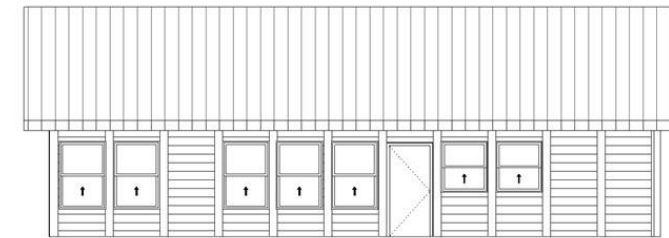
## AMERICAN EAGLE RAPID CABIN



FRONT ELEVATION



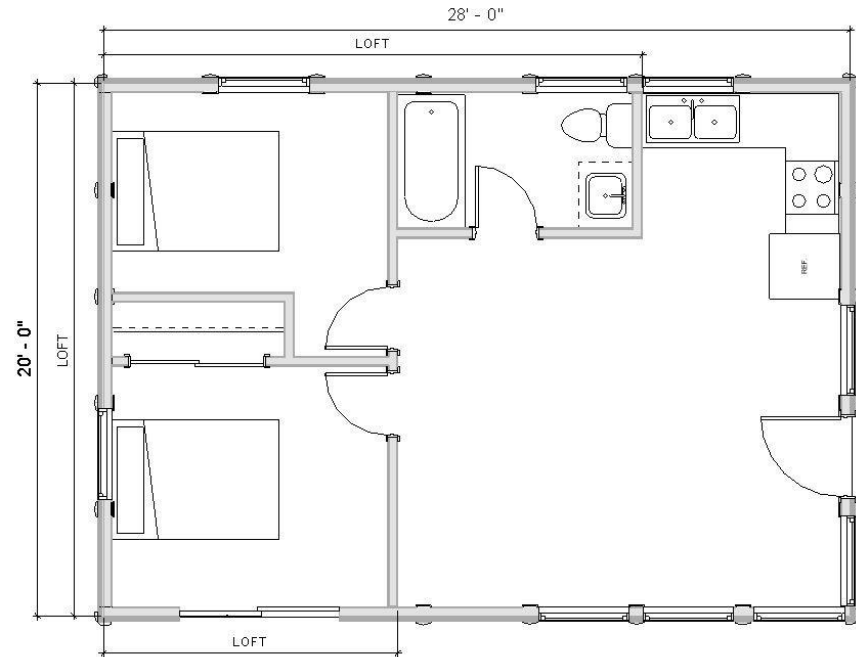
BACK ELEVATION



SIDE ELEVATION

# LOON MODEL

- Rapid Cabin Dimensions = 20' x 28'
- 2 Bedroom & 1 Bathroom
- Approximately 560 Sq. Ft.
- This cabin was designed by the owner of Cabintek in honor of his grandfather, a WWI & WWII veteran who retired in the Upper Peninsula of Michigan! His dream started by enjoying his grandfather's a perfect lake cabin...and it can also fulfill yours!



LOON 20'x28'

MAIN FLOOR 560 SF

© CABINTEK LLC

OPTIONAL LOFT 224 SF

## LOON RAPID CABIN



FRONT ELEVATION



BACK ELEVATION

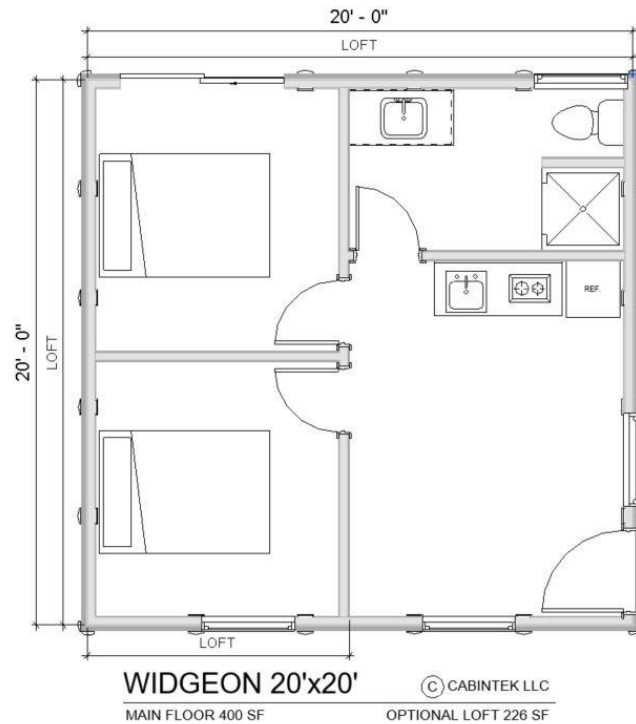


SIDE ELEVATION

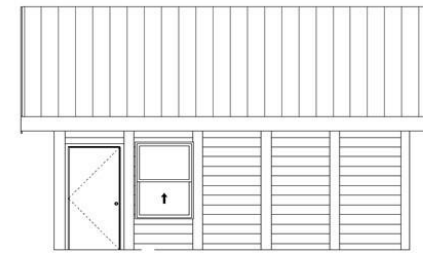


# WIDGEON MODEL

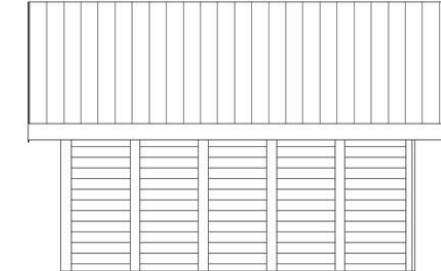
- Rapid Cabin Dimensions = 20' x 20'
- 2 Bedroom & 1 Bathroom
- Approximately 400 Sq. Ft.
- A simple cabin to enjoy the outdoors. Great model for a luxury on a budget! This has been a popular model for lake resorts. The perfect model for a family to spend the week away from the hustle and bustle of the daily grind!



## WIDGEON RAPID CABIN



FRONT ELEVATION



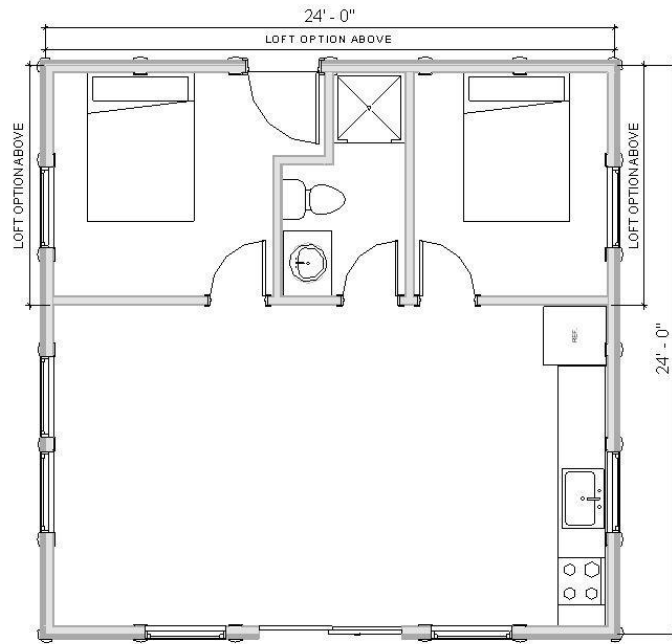
BACK ELEVATION



SIDE ELEVATION

# WOOD DUCK MODEL

- Rapid Cabin Dimensions = 24' x 24'
- 2 Bedroom & 1 Bathroom
- Approximately 576 Sq. Ft.
- A simple cabin designed for year rounds use! Two bedrooms for two couples or the kids. Beautifully open concept raftered living room and kitchen.



WOOD DUCK 24'x24' © CABINTEK LLC  
MAIN FLOOR 576 SF      OPTIONAL LOFT 212 SF

## WOOD DUCK RAPID CABIN



FRONT ELEVATION



BACK ELEVATION



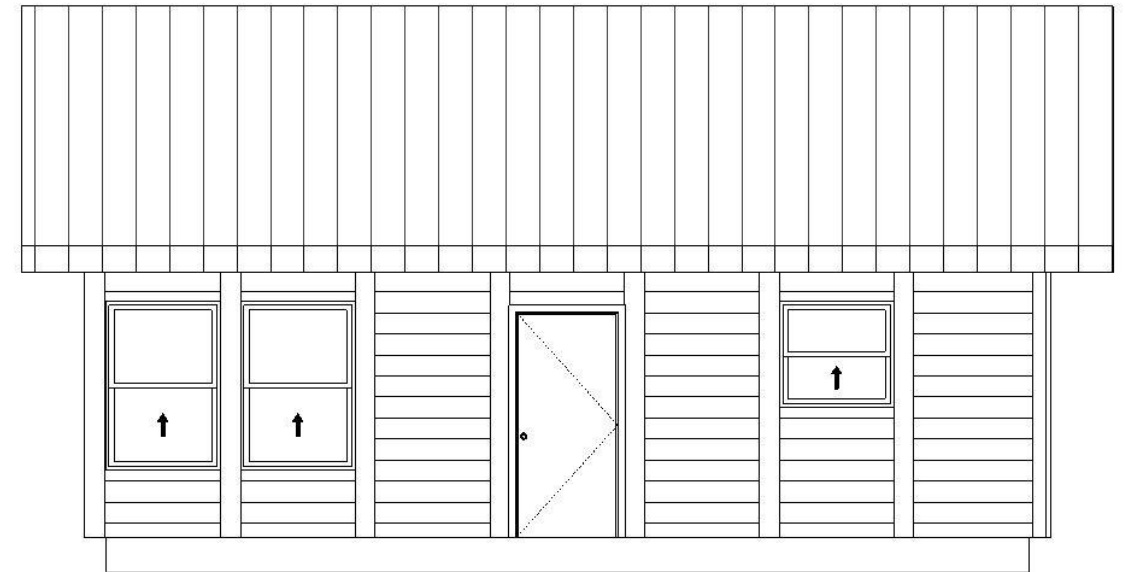
SIDE ELEVATION

# NORTHERN SHOVELER MODEL

- Rapid Cabin Dimensions = 20' x 28'
- 2 Bedroom & 1 Bathroom
- Approximately 560 Sq. Ft.
- Model includes an entryway and loft option
- A great compact model with all the amenities. Perfect cabin for the hunter or fisherman!

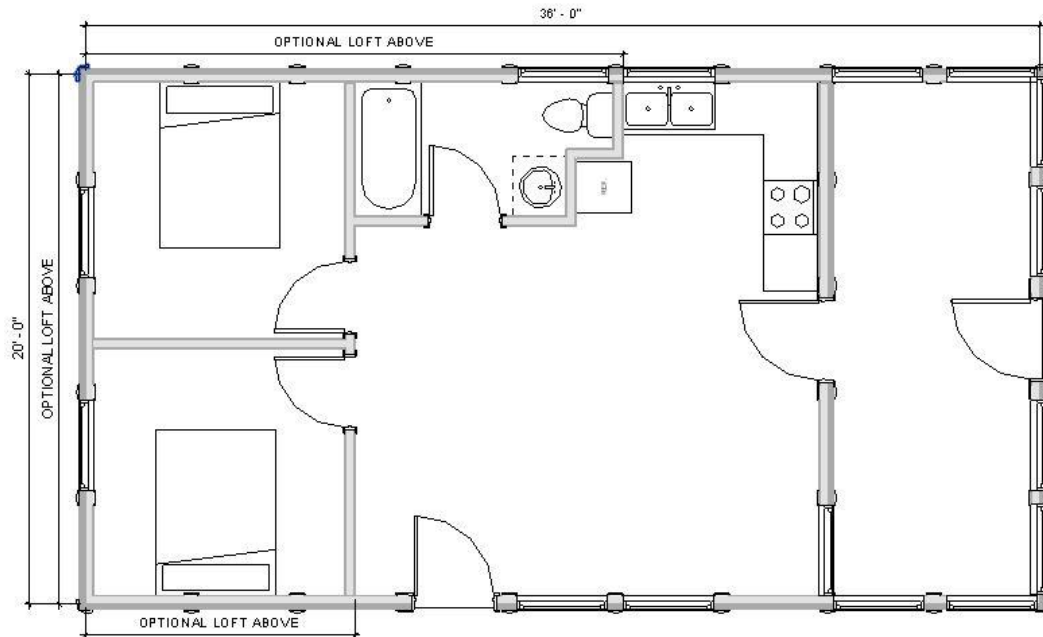


NORTHERN SHOVELER RAPID CABIN



# BARN OWL MODEL

- Rapid Cabin Dimensions = 20' x 36'
- 2 Bedroom & 1 Bathroom
- Approximately 720 Sq. Ft.
- Model includes large screened in porch
- Open concept allows for many finish options. Screen in porch provides a great spot to enjoy the outdoors without the mosquitoes!

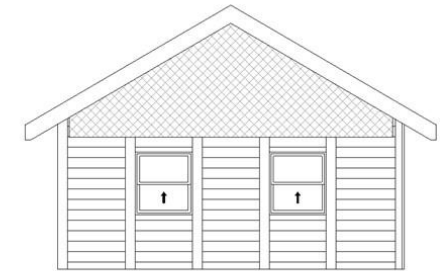


**BARN OWL 20'x36'** ©CABINTEK LLC  
 MAIN FLOOR 720 SF      LOFT FLOOR 223 SF

## BARN OWL RAPID CABIN



FRONT ELEVATION



BACK ELEVATION



SIDE ELEVATION