



Woody Building System

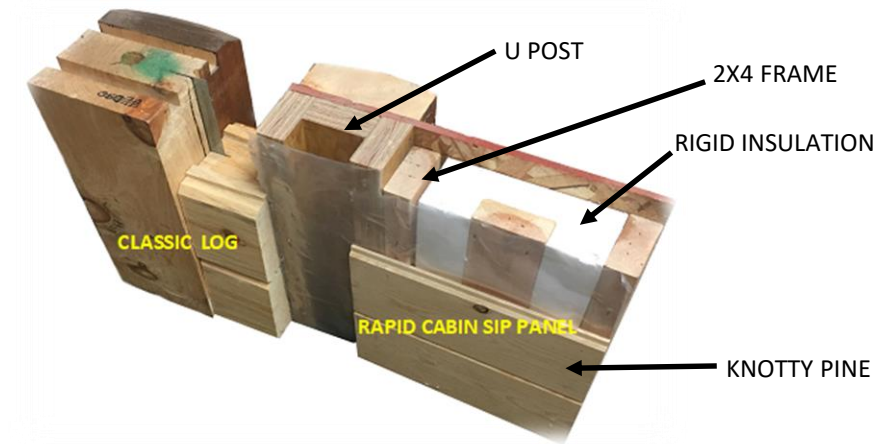
The Most Cost-Effective Log Cabin Building System on The Market

Time is Money & Sanity

- The Woody Building System takes advantage of productivity investments in the manufacturing plant and provides *simplicity* and *speed* on the jobsite
 - Job site construction has historically been inefficient and chaotic. Industry estimates for home construction peg the best construction companies in the world only able to recognize half of time on site as being applied to building a home
 - For the Do-It-Yourself, this can be the environment you find yourself in, which is why we have created the Woody Building System
 - We will save you time and money because of our engineered and manufactured log cabin components. We can help you even if you can barely hammer a nail!

Woody Models

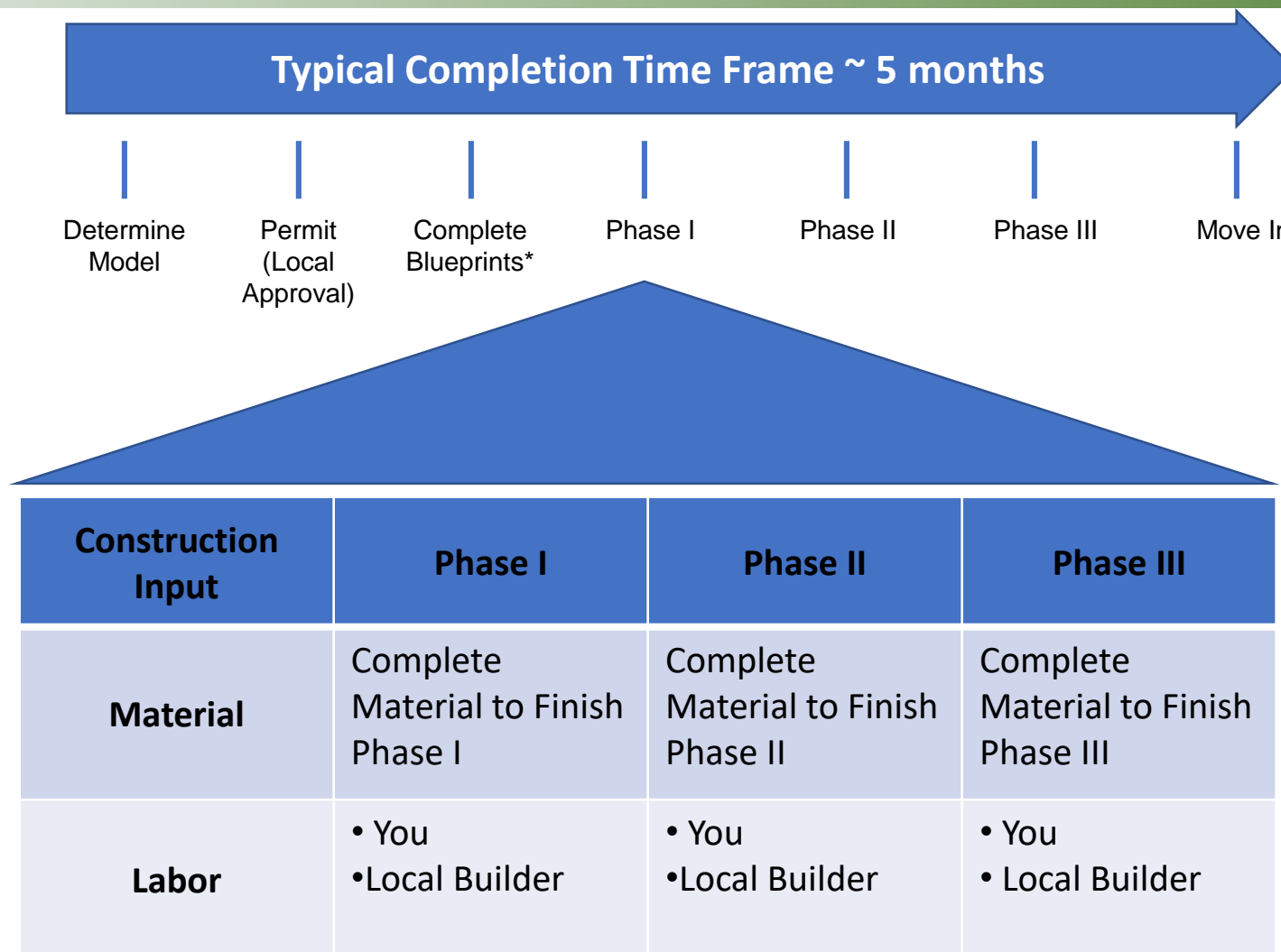
- You have two choices of Woody Model Series
 - The Classic Series – Full 8” log system, pre-cut and engineered to fit together without need for measuring or cutting (5 basic parts...infinite building options)
 - The Rapid Cabin Series – Structural Insulated Panels, pre-manufactured and engineered with robust log siding and posts to fit together without the need for measuring and cutting (SIP constructed basic parts...infinite building options)
- Both series are engineered and drilled for electrical wiring
- Both series are insulated and beautiful



The Woody Building System Phases

- We will talk to you about three phases of building your cabin:
 - Phase 1 – Your Woody Kit – Walls, Vertical Logs/Support, Rafters, Knotty Pine Ceiling Closure Boards, Window Sills, Flashing & Mounting Hardware
 - Phase 2 – Phase 1 + Roof Framing & Deck, Roof Insulation, Doors, Windows, Loft, Floor Framing & Deck, Floor Insulation, Decking, Gable Finish Material, Interior Wall Framing (Asphalt or Metal Roof not included)
 - Phase 3 – Phase 2 + All other material, utilities & appliances to complete your cabin
- We are often asked what will be the total cost of my log cabin. A rule of thumb is 3x the Phase 2 cost. Depending on the cabin and your needs, this number could vary in either direction – the large variable is often labor after completion of Phase 2...back to the value of the Woody Building System, we control the majority of material costs and save you much of the labor time to get you Dried In!

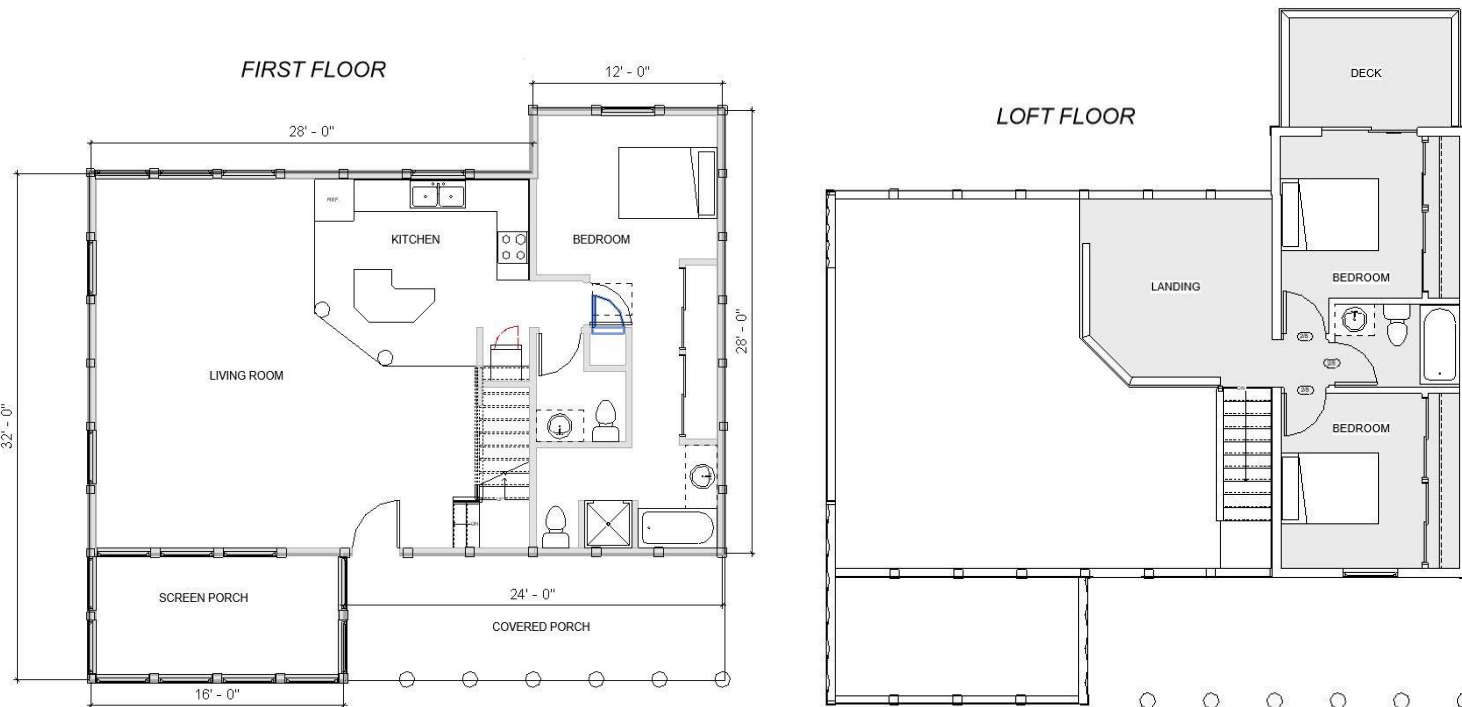
What is the Process to Start



* Blueprints are generally \$4,000 after agreement of price, applied to the cost of your Woody Kit

RED TAILED HAWK MODEL

- Rapid Cabin Dimensions = 36' x 40'
- 3 Bedroom & 2.5 Bathroom
- Approximately 1,500 Sq. Ft.
- Model includes large covered porch and large screen room!
- This model has it all, screen porch off the living room to enjoy the outdoors even when the mosquitos arrive. The covered porch keeps the weather off you while you grill or entertain. We maximize use of the loft above with added bedrooms and a bath. This model has been put on lake lots and mountain tops!

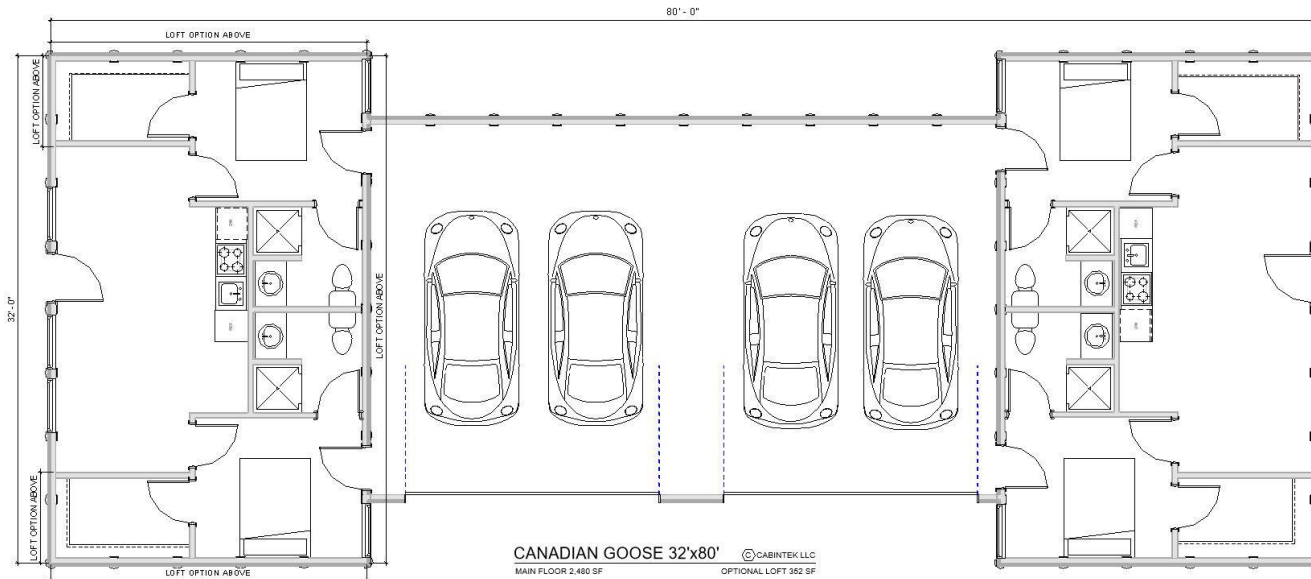


RED TAILED HAWK RAPID CABIN

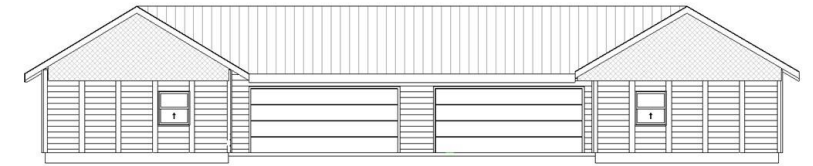


CANADIAN GOOSE MODEL

- Rapid Cabin Dimensions = 32' x 80'
- 2 bed & 2 bath for each duplex living area
- Approximately 2640 Sq. Ft.
- This model was designed for the vacation rental investment crowd. A perfect model to pay the taxes while being able to enjoy a space for yourself. Everything included to make your cabin rental the choice of customers!



CANADIAN GOOSE RAPID CABIN



FRONT ELEVATION

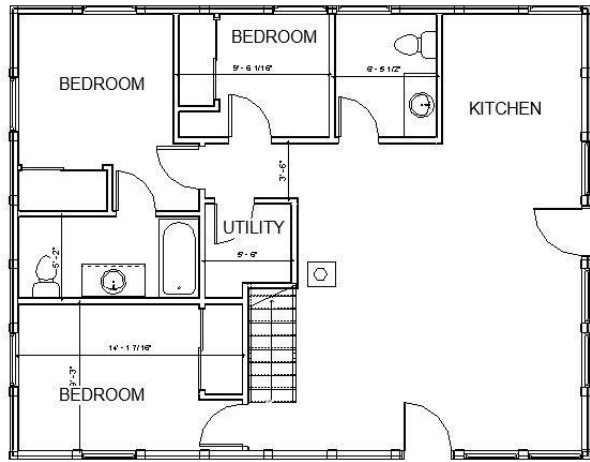


SIDE ELEVATION

BLUE WINGED TEAL MODEL

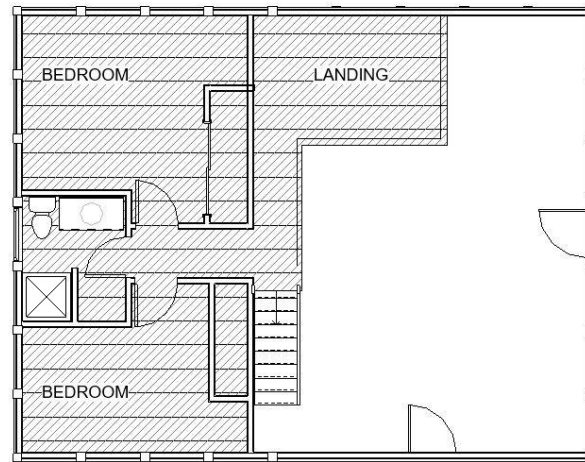
- Rapid Cabin Dimensions = 36' x 36'
- 5 Bedroom & 2.5 Bathroom
- Approximately 1,300 Sq. Ft.
- Model include a covered porch
- This model was built as a replica of cabins we enjoyed vacationing in northern Wisconsin. Beautiful open view for 2nd story landing, lots of bedrooms and bathrooms. Privacy yet an open concept for a late-night game of cards with the kids and cousins!

FIRST FLOOR



COVERED PORCH

SECOND FLOOR



BLUE WING TEAL CABIN



FRONT ELEVATION



SIDE ELEVATION

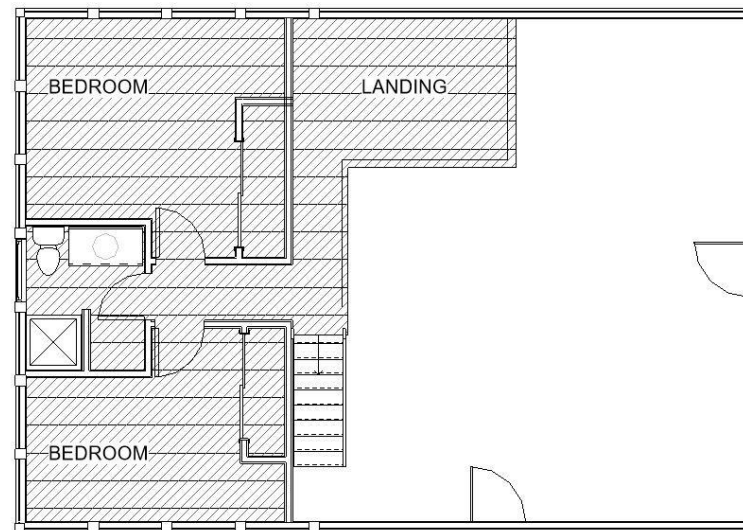
MALLARD MODEL

- Rapid Cabin Dimensions = 28' x 40'
- 5 Bedroom & 2.5 Bathroom
- Approximately 1,100 Sq. Ft.
- Model includes 2nd story with two bedrooms and a full bath.
- Pack in the crew. This model provides 5 bedrooms and 2 and a half baths to make sure your family and friends have their own space yet can enjoy each other with an open concept living room. This model was originally designed for a lake lot in Northern Wisconsin on the famed Turtle Flambeau Flowage!

FIRST FLOOR



SECOND FLOOR



MALLARD RAPID CABIN



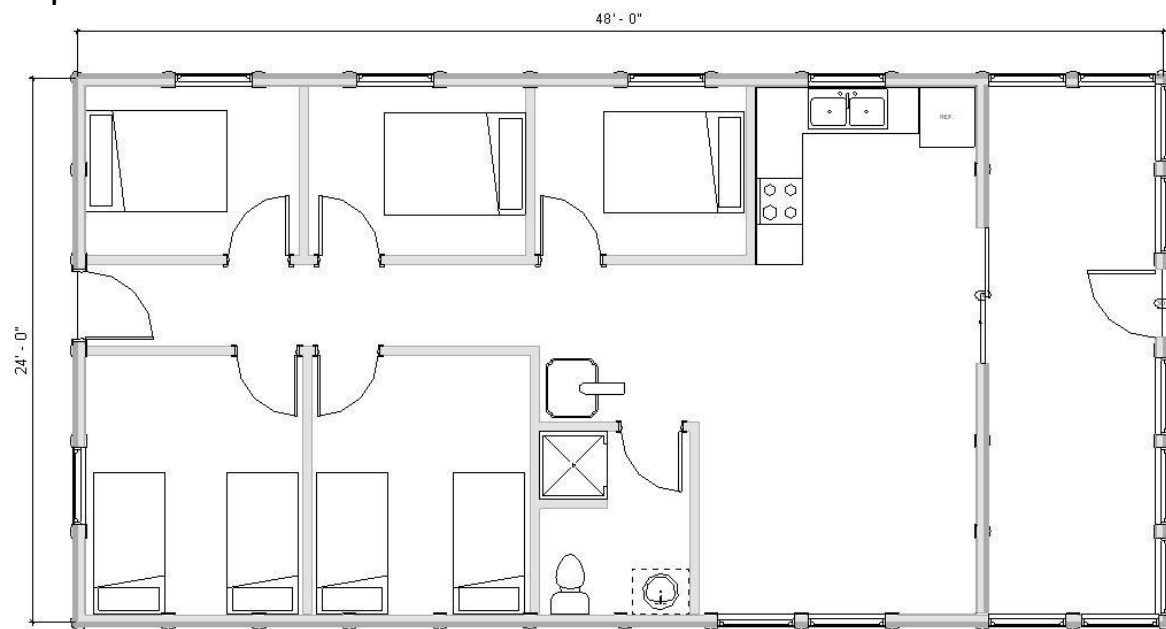
FRONT ELEVATION



SIDE ELEVATION

BLACK DUCK MODEL

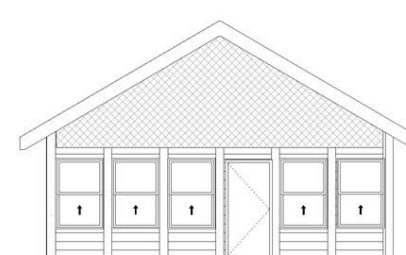
- Rapid Cabin Dimensions = 24' x 48'
- 5 Bedroom & 1 Bathroom
- Approximately 1200 Sq. Ft.
- Model includes large screened in porch
- A big-time cabin for hunters and fishermen! Lots of bedrooms for your family and friends. Best part is enjoying the sunset on the screen porch after a fun time outside!



BLACK DUCK 16'x28'
MAIN FLOOR 1,152 SF



BLACK DUCK RAPID CABIN



FRONT ELEVATION



BACK ELEVATION

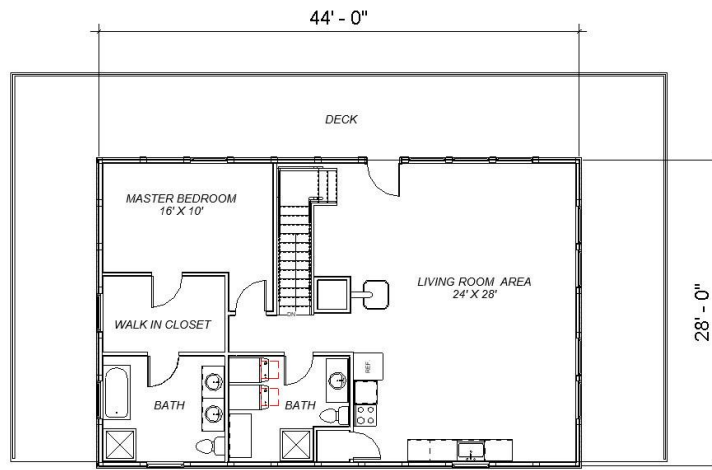
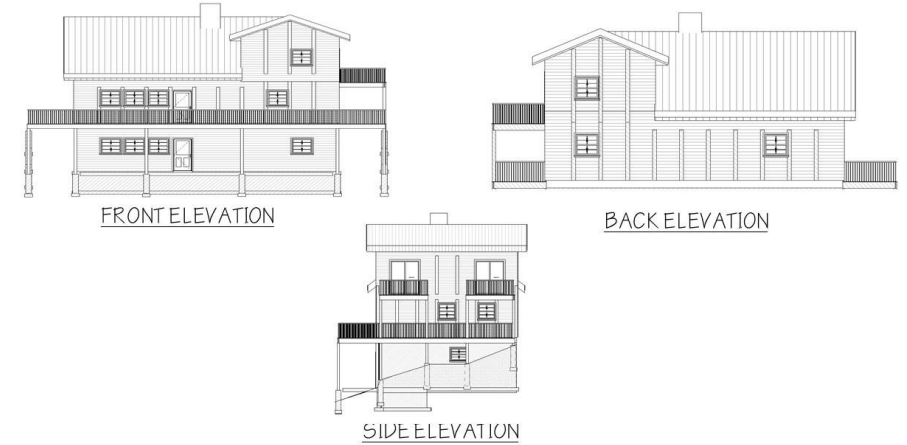


SIDE ELEVATION

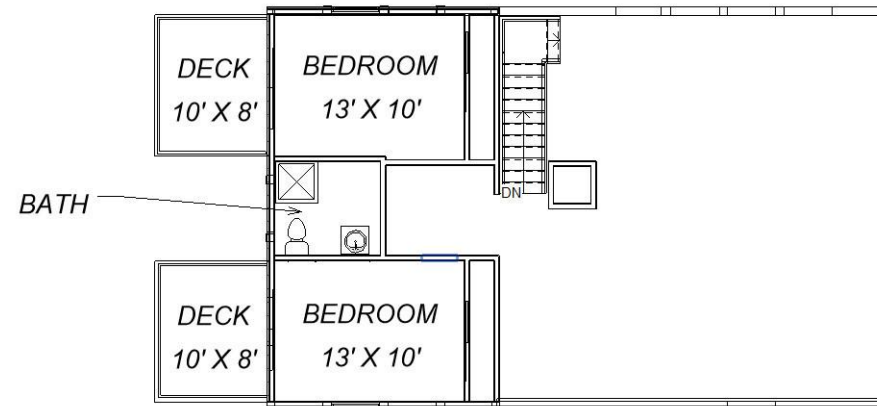
MERGANSER MODEL

- Rapid Cabin Dimensions = 28' x 44'
- 6 Bedroom & 3 Bathroom
- Approximately 2,800 Sq. Ft.
- Models include wrap around porch on two sides and decks off 2nd story bedrooms
- One of our largest and most popular year-round homes! Mega space on your wrap around porch to enjoy the outdoors, B-B-Q on the grill or have a cup of coffee in the morning. Large open concept living room and kitchen. Many of these cabins are build with exposed basement! Our customers rave about the value we provide in this large home cabin footprint!

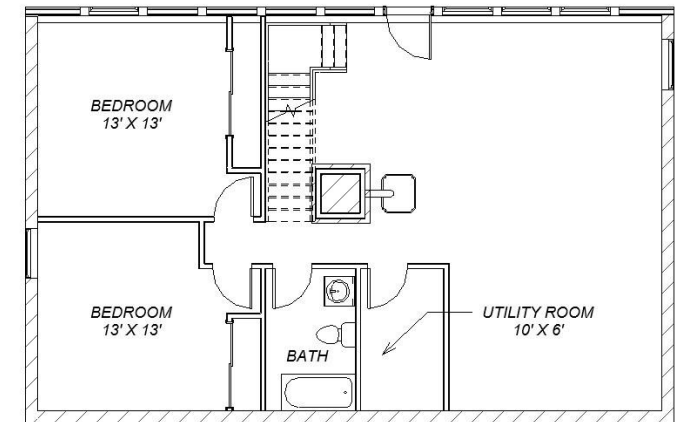
MERGANSER RAPID CABIN



FIRST FLOOR



SECOND FLOOR



LOWER LEVEL